

**A.R.C.
LASER**

enlighten your surgery.



V A R I O

NO COMPROMISES.
THE PERFECT OPTIC
DESIGN FOR EVERY
EYE SEGMENT.

LASER...INNOVATION
MADE IN GERMANY

www.arclaser.de info@arclaser.de

V A R I O



An ingenious laser combination without compromise

VARIO CLASSIC⁵¹⁴ – Q-LAS

VARIO CLASSIC⁵¹⁴ – CITO⁵³²

Brilliant for
the posterior
eye segment

Ideal for
the anterior
eye segment

1160 x 430 mm

**SLIM DESIGN FOR LIMITED
SPACE REQUIREMENTS**

**ONE LASER PER
SLIT LAMP**

**TWO SLIT LAMPS
INCLUDED**

Anti collision system

Compartment for all
connections

Electronic
height adjustment
up to 990 mm

Stable and slim design,
wheelchair accessible



to
920
mm

1050 mm

580 mm



VARIO CITO⁵³² – Q-LAS

Ample room for arm rests and accessories

Common sense dictates that by integrating two laser systems into a single workstation will maximize versatility and convenience. VARIO is the only system that enables the diagnostic crossover from the anterior segment to the posterior segment without interruption. Historically, combination designs suffer at the expense of weight, height and optical quality.

As a result, the potential advantages of a combination design are often not achieved.



Combo is redefined by VARIO.

Optic design optimized for specific applications.

Table width enables complete mobility of the operator and patient.

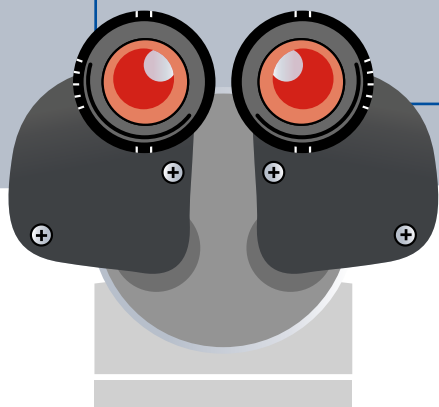
**Bonus benefit:
2 independent slit lamps.**

Highest flexibility.

Multipurpose and unique.

Joystick with laser trigger

Height adjustment,
slit lamp mobility and
trigger in one.



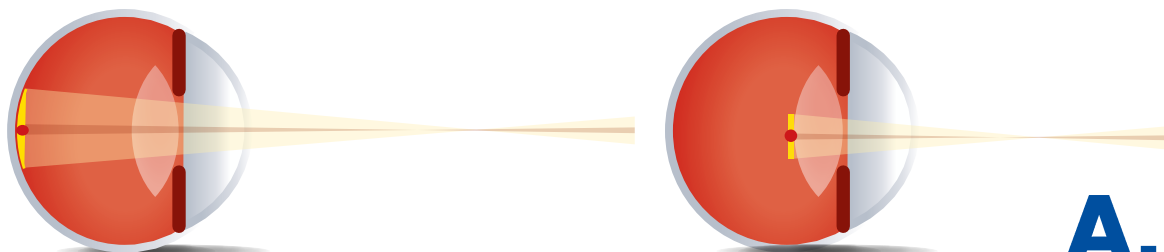
Premium eye protection

Neutral color filter design

- High grade of color fidelity
- Detailed illustration

Your choice:

- Brand contact glasses
- Optics: parallel-/convergent
- foot switch



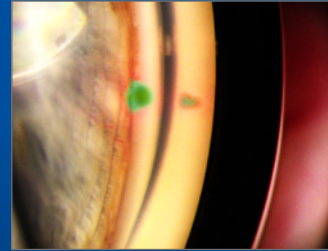
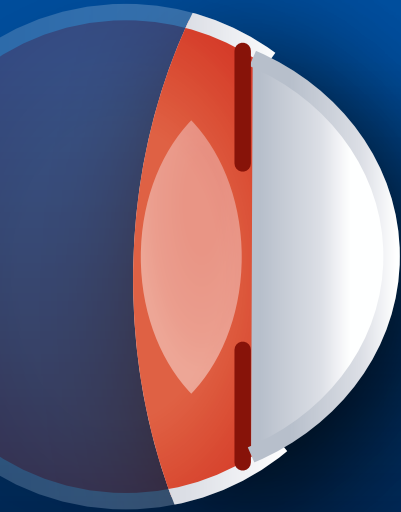
V A R I O

The perfect optic design for every eye segment

A.R.C.
LASER

PCL5 Z

Ideal for the anterior
eye segment



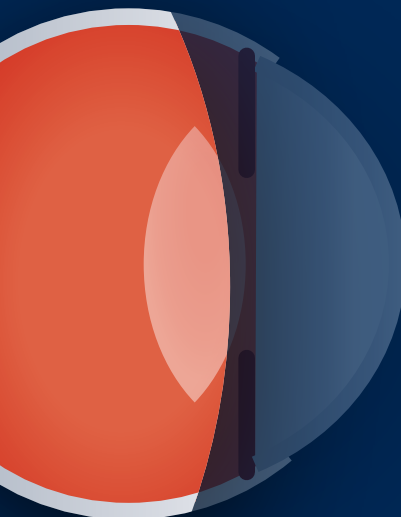
CITO 532
SLT-Laser



Q-LAS
Iridotomie &
Kapsulotomie

PCL5 SH

Ideal for the posterior
eye segment



CLASSIC 532 / 514
Laser Photocoagulation

Worldwide fastest SLT

KTP: compact and portable

Nd:YAG with DualSpot

MORE CHOICES: VARIO.

Two high-class lasers on one table.
It is your choice: SLT + YAG laser,
SLT + retina laser or YAG + retina laser



SPECIFICATIONS

	Q-LAS	CITO 532	CLASSIC 514
Laser Wavelength	Q-switched, Nd:YAG, 1064 nm,	Q-switched, Nd:YAG frequency doubled 532 nm	µ-chip laser 514 nm
Output Energy (Laser)	0.5 mJ to 10 mJ - Single Pulse	2 mJ max.	1.2 Watt max. @ patients cornea
Therapy beam pulse settings	0.1 mJ steps from 0.5 mJ (< 4 ns) Burst mode 1, 2 or 3 Pulses Cone angle 16°, Spot size < 10 µm Defocussing 150/300µm, posterior	0.1 mJ steps from 0,2 to 1,4 mJ 0.2 mJ steps to 2 mJ	1 ms, 2, 4, 6, 8,10, 25, 50, 75, 100, 150, 200, 300, 400, 500, 600, 700, 800, 900ms, 1 s, 1,5s, 2 s 1, 2, 3, 4, 5, 10 Hz
Beam Delivery	Coupling in slit lamp	Coupling in slit lamp	Fiber connector A.R.C. / 62,5 µm
Display / Control	LED Interface	7" Color touch screen	LED Interface, Jog dial
Cooling	Internal, air	Internal, air	Internal, forced air
Aiming Beam	635 nm red < 1mW, adjustable	635 nm red < 1mW, adjustable	Red 635 nm < 1mW, adjustable
Power Requirement	100-240 V AC, 47/63 Hz, 90 VA	100-240 V AC, 47-63 Hz , 5A	100-240 V AC, 47/63 Hz, 1.4-0.6A
Laser classification EN 60825-1	Therapy beam: 3B Aiming beam: 2	Therapy beam: 3B Aiming beam: 2	Therapy beam: 4 514 nm, P = 2 W Aiming beam: 2 635 nm, P < 5 mW

VARIO

space requirements	0,5 m ² , table: 116 cm x 43 cm
power requirements	100 bis 240V, 47/63Hz, 5A

Alterations of the described features or pictured features are possible. Please keep updated before ordering. Specifications are subject to change without notice.

VISIBLE AND INVISIBLE LASER RADIATION
Avoid eye or skin exposure to direct or scattered radiation
LASER CLASS: see specifications

